







SO WHAT'S THE DEAL?

Negative effect of saline soils

-  Absence or reduction of useful microflora which is the key to long-term soil fertility
-  The soil does not retain moisture, gets overheated in hot weather and freezes solid in winter.
-  Plant growth inhibition. Yield reduction
-  Underdeveloped root system. Drought survival problems

**TURN OVER THE PAGE
AND FIND OUT WHAT TO DO**



BIO-GEL, a unique pro- and prebiotic has been created on the basis of natural bacteria from the best Ukrainian soils under the guidance of Serhiy Osypenko, an academician of the Engineering Academy of Ukraine.

It has no analogues in the world, which is confirmed by patent № UA 119601.

The product quality is guaranteed by the inventor!

RELEASE FORM

Gel-like fluid from dark brown to black, with a smell of hydrogen sulfide.

Packed in polyethylene containers of 20 L



Developer and manufacturer: **TEKMASH** Institute, SIPE,
office 77, 177/2, Perekopska St., Kherson, 73036, Ukraine
<https://biogel.com.ua>, export@biogel.com.ua
+38 067 742 32 35

**REMOVE THE SALT
FROM THE FIELD!**



**SALINE SOIL RESTORER
(of new generation)**

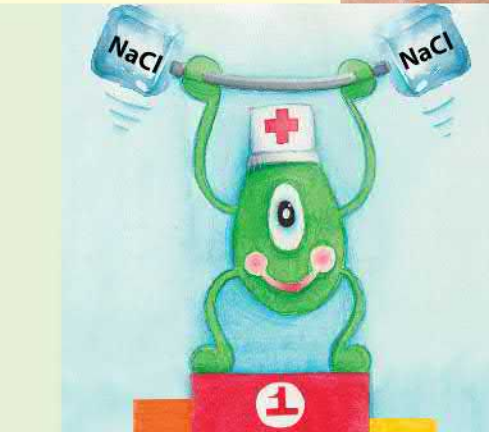


How we harden ~~steel~~ bacteria



1
Only hard work and endurance

2
Introducing a miracle product

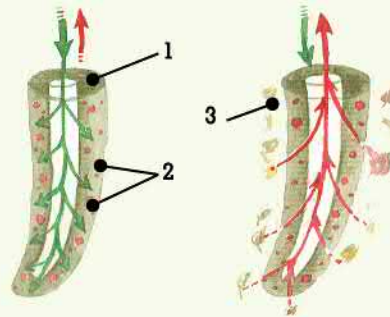


3
Conquest of new peaks. Powerful soil strength

Action mechanism

Bacteria secrete enzymes decomposing plant debris in the soil. Fungi help to deliver nutrients to the roots.

ROOT STRUCTURE



- Exudates - root secretions into the soil.
- Nutrients from soil to root.

1. Rhizosphere - area of microbiota activity.
2. Microbiota, bacteria, fungi, ray fungi.
3. Plant debris and nutrients.

Salt reduces this mechanism effect. The partial pressure of the saline solution prevents the root system from releasing nutrients for the formation of natural microflora. Wild hardened bacteria of the **BIO-GEL** pro- and prebiotic come to the rescue. They quickly penetrate the soil surface and help to create a rhizobial cover around the roots. The activity of the roots is accelerating.

Landing of rescuers

4
Bacteria in low spirits and despair in solid soil



5
The landing of hardened bacteria will fix everything

6
All bacteria live well in loose soil

